



REPORTS

DRUMMING

We don't suppose that a lot of drumming takes place among the general population outside of *Rock Band 2* on the Playstation, but that should mean it's all the easier to stand out. Just don't be caught with a watch that cannot match or elevate one's presence. Go loud!

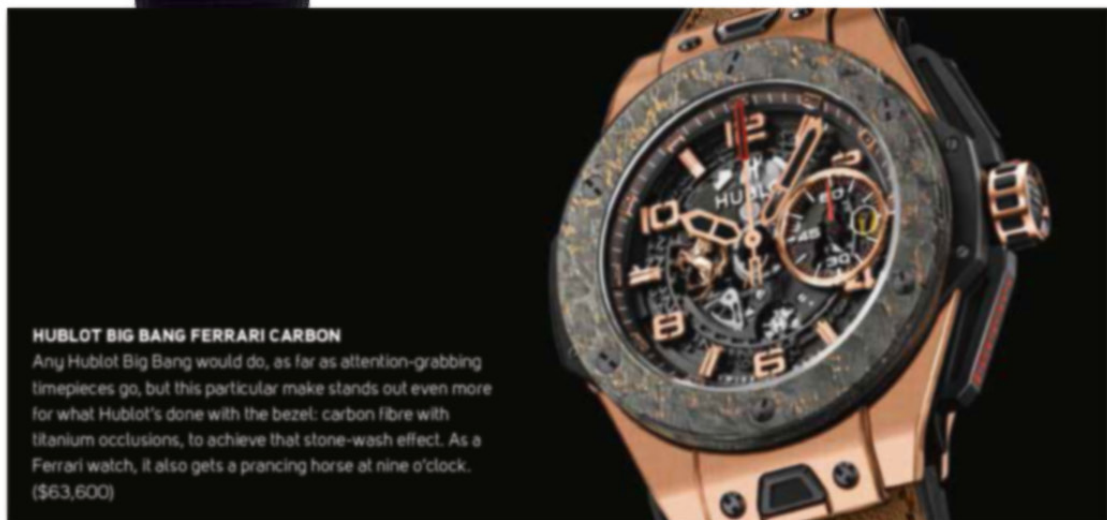


HYT H4 METROPOLIS

Instead of simply relying on hands that go round and round, time here is indicated by liquids pushed and pulled through capillary tubes. An engineer's nightmare at miniaturisation, but it sure grabs the attention. Failing which, it even has its own mechanical (dynamo-driven) LED lighting. (\$127,000)

CORUM BUBBLE PAISTE

First released in 2000, Corum's Bubble watch is back after a none-too-brief hiatus. Its thick, spherical crystal inspired by a vintage dive watch was an excellent magnifying glass for bold Pop Art style graphics. This time round, it lends fetching distortion to Op Art. One model in particular is especially fitting for drummers: Corum partnered with renowned cymbal manufacturer Paiste to create a dial that is practically a miniature bronze cymbal! Limited to 350 pieces. (\$7,131.55)



HUBLOT BIG BANG FERRARI CARBON

Any Hublot Big Bang would do, as far as attention-grabbing timepieces go, but this particular make stands out even more for what Hublot's done with the bezel: carbon fibre with titanium occlusions, to achieve that stone-wash effect. As a Ferrari watch, it also gets a prancing horse at nine o'clock. (\$63,600)

HIGHLIGHTS

A LITTLE BLUE

HYT enters uncharted waters with the H2 Tradition, which uses classical watch design elements it hasn't previously explored **WORDS JAMIE TAN**

Gears, wheels, and liquids? Steampunk! If there's any watchmaker that can pull off a timepiece with such a theme, it's HYT. After all, no other brand out there tells the time using a liquid module that's completely integrated with a mechanical movement. The H2 Tradition was meant to be HYT's exercise in the design codes of traditional watchmaking. With the liquid module so prominently displayed on its dial, however, the timepiece also has an ultramodern dimension to it. Synthesise the two, and a work resembling something from the retrofuturism art movement emerges.

The H2 Tradition marks many firsts for the brand. It's the first HYT watch to be decorated with guilloché, the first to have lacquered dials, and the first to be fitted with blued hands. These details are apparent enough, but the timepiece wasn't merely the result of just changing a few components and stepping on a previously unused finishing technique. A quick comparison with previous H2 models will reveal that the minute indicator has been moved to a sub-dial at 12 o'clock, while the balance now nestles in the "V" formed by the bellows. This rearrangement has necessitated a redesign of the calibre, as the gear train has to accommodate its components' new positions. For this, HYT looked to its partner, Audemars Piguet Renaud

et Papi (APRP), to implement the changes. The decision to finish the mainplate with guilloché – both on the front and the back – was another technical detail that APRP had to work on. Since material was going to be removed, the mainplate needed to be thicker to maintain its integrity. This, in turn, affected the tolerances for the parts' dimensions and fitting, which had to be recalculated.

Major changes aside, it's also the minutiae on the H2 Tradition that gives the watch its classical slant. Note how the sub-dials and flange are outlined in gold, and the absence of a crown protector seen on the rest of the H2 models. The final touch is the judicious use of blue, beginning with blued hands that are matched with an alligator leather strap in the same colour. The hour indicator also uses that colour, for a timepiece that is literally blue-blooded. **W**

MOVEMENT Manual-winding HYT calibre with liquid module and eight-day power reserve

CASE 48.8mm in white gold and titanium, water resistant to 50m

STRAP Patent blue alligator leather with titanium deployant buckle

PRICE \$250,000




HIGHLIGHTS

GOOD TO BE BAD

HYT explores its edgier side with the Skull Bad Boy, which debuts a new colour for its liquid module WORDS JAMIE TAN



slate grey leather strap. The watch's overall look is sinister, and fully deserving of its name. The general lack of vibrancy doesn't translate into a lack of details though. Note how the grey hour indexes on the flange support the theme with their Gothic typeface, and the dial's Clous de Paris pattern that resembles a leather cuff's studs. The skull itself takes centre stage, and is a wonder to behold – it's a steel/carbon composite created by folding the two materials over themselves multiple times, before being polished and sealed with varnish. The folding process is akin to that used in crafting Japanese swords, and creates a similar pattern of wavy layers. As every batch of materials folds differently during the process, no two skulls will be alike. The displays in the eyes return in the Skull Bad Boy; the socket on the left houses a rotating disc that acts as a running seconds indicator, while the one on the right is a power reserve indicator that turns progressively darker as the mainspring winds down. 

MOVEMENT Manual-winding HYT calibre with fluid module and 65-hour power reserve

CASE 51mm in DLC-coated titanium, water resistant to 50m

STRAP Slate grey alligator leather with Velcro clasp

PRICE \$125,000

Death. Power. Celebration. The skull is associated with numerous themes, and HYT has used it to great effect in its namesake collection. The Skull watch was first released in two references with red and green liquids, each sporting matching eyes of the corresponding colour and resembling a different comic book character. The Skull Maori came next, and had detailing that evoked traditional Maori tribal tattoos. For its latest creation, the Skull Bad Boy, HYT has ventured into the rebellious, grittier subcultures of biking and hard rock.

The most striking aspect of the new release is its fluid module's black liquid, which had taken the brand over a year to develop. It's worth noting that every new colour used in the brand's fluid modules is an individual "product" whose hue is just one aspect that must be engineered – the liquid must also maintain a defined meniscus within the glass tube, repel itself from the tube's inner walls instead of sticking to it, have a suitable viscosity and thermal coefficient, and finally be UV resistant.

Chemistry aside, black also represents an entirely new shade for the brand, whose past developments have been confined to bright, almost fluorescent liquids. The new liquid is a perfect fit for the Skull Bad Boy's monochromatic colour scheme, which includes a black DLC-coated titanium case and

